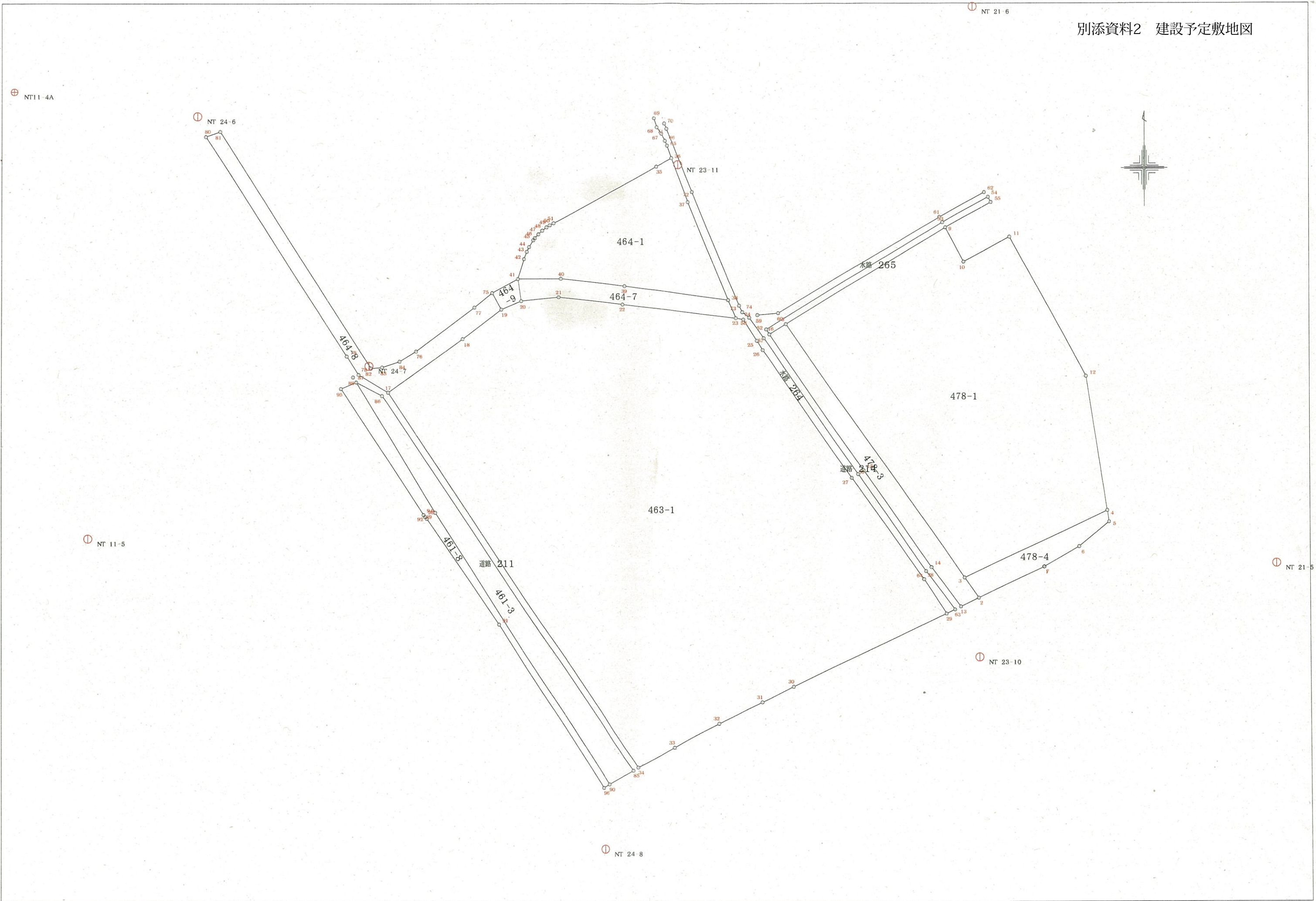


別添資料2 建設予定敷地図



地番 464-1				
測点	X座標	Y座標	$Y_{n+1}-Y_{n-1}$	$X*(Y_{n+1}-Y_{n-1})$
1	135.170.066	27.520.683	17.949	2,426.167.514634
2	135.171.332	27.523.010	4.878	659.365.757496
3	135.164.739	27.525.561	8.624	1,165.660.709136
4	135.149.932	27.531.634	-9.704	-1,311.494.940128
5	135.152.093	27.515.857	-25.531	-3,450.568.086383
6	135.153.193	27.506.103	-16.074	-2,172.452.424282
7	135.153.142	27.499.783	-5.380	-727.123.903960
8	135.156.150	27.500.723	1.371	185.299.081650
9	135.157.254	27.501.154	0.767	103.665.613818
10	135.157.967	27.501.490	0.951	128.535.226617
11	135.158.989	27.502.105	0.858	115.966.412562
12	135.159.313	27.502.348	0.766	103.532.033758
13	135.159.895	27.502.871	1.088	147.053.965760
14	135.160.448	27.503.436	1.191	160.976.093568
15	135.160.950	27.504.062	1.092	147.595.757400
16	135.161.258	27.504.528	0.999	135.026.096742
17	135.161.568	27.505.061	16.155	2,183.535.131040
倍面積			740.039428	
1/2			370.0197140	
地積			370 m ²	

地番 463-1				
測点	X座標	Y座標	$Y_{n+1}-Y_{n-1}$	$X*(Y_{n+1}-Y_{n-1})$
18	135.135.967	27.480.034	-26.364	-3,562.724.633988
19	135.144.070	27.491.328	17.225	2,327.856.605750
20	135.148.538	27.497.259	8.967	1,211.876.940246
21	135.149.816	27.500.295	8.530	1,152.827.930480
22	135.150.411	27.505.789	15.248	2,060.773.466928
23	135.149.311	27.515.543	26.964	3,644.166.021804
24	135.147.203	27.532.753	18.327	2,476.842.789381
25	135.146.975	27.533.870	3.107	419.901.651325
26	135.143.765	27.535.860	2.836	383.267.717540
27	135.142.362	27.536.706	14.409	1,947.266.294058
28	135.122.993	27.550.269	24.300	3,283.488.729900
29	135.107.615	27.561.006	14.115	1,907.043.985725
30	135.102.405	27.564.384	-19.675	-2,658.139.818375
31	135.091.402	27.541.331	-27.885	-3,767.023.744770
32	135.089.060	27.536.499	-11.235	-1,517.725.589100
33	135.085.835	27.530.096	-13.144	-1,775.568.215240
34	135.082.239	27.523.355	-12.404	-1,675.560.092556
35	135.079.197	27.517.692	-43.321	-5,851.765.893237
倍面積			6,804.145871	
1/2			3,402.0729355	
地積			3402.07 m ²	

地番 478-1				
測点	X座標	Y座標	$Y_{n+1}-Y_{n-1}$	$X*(Y_{n+1}-Y_{n-1})$
36	135.107.873	27.567.198	-48.515	-6,554.758.458595
37	135.146.291	27.540.261	-2.841	-383.950.612731
38	135.160.857	27.564.357	26.906	3,636.638.018442
39	135.155.659	27.567.167	9.814	1,326.417.637426
40	135.159.425	27.574.171	18.412	2,488.555.333100
41	135.138.365	27.585.579	14.605	1,973.695.820825
42	135.118.023	27.588.776	-18.381	-2,483.604.380763
倍面積			2,993.357704	
1/2			1,496.6788520	
地積			1496 m ²	

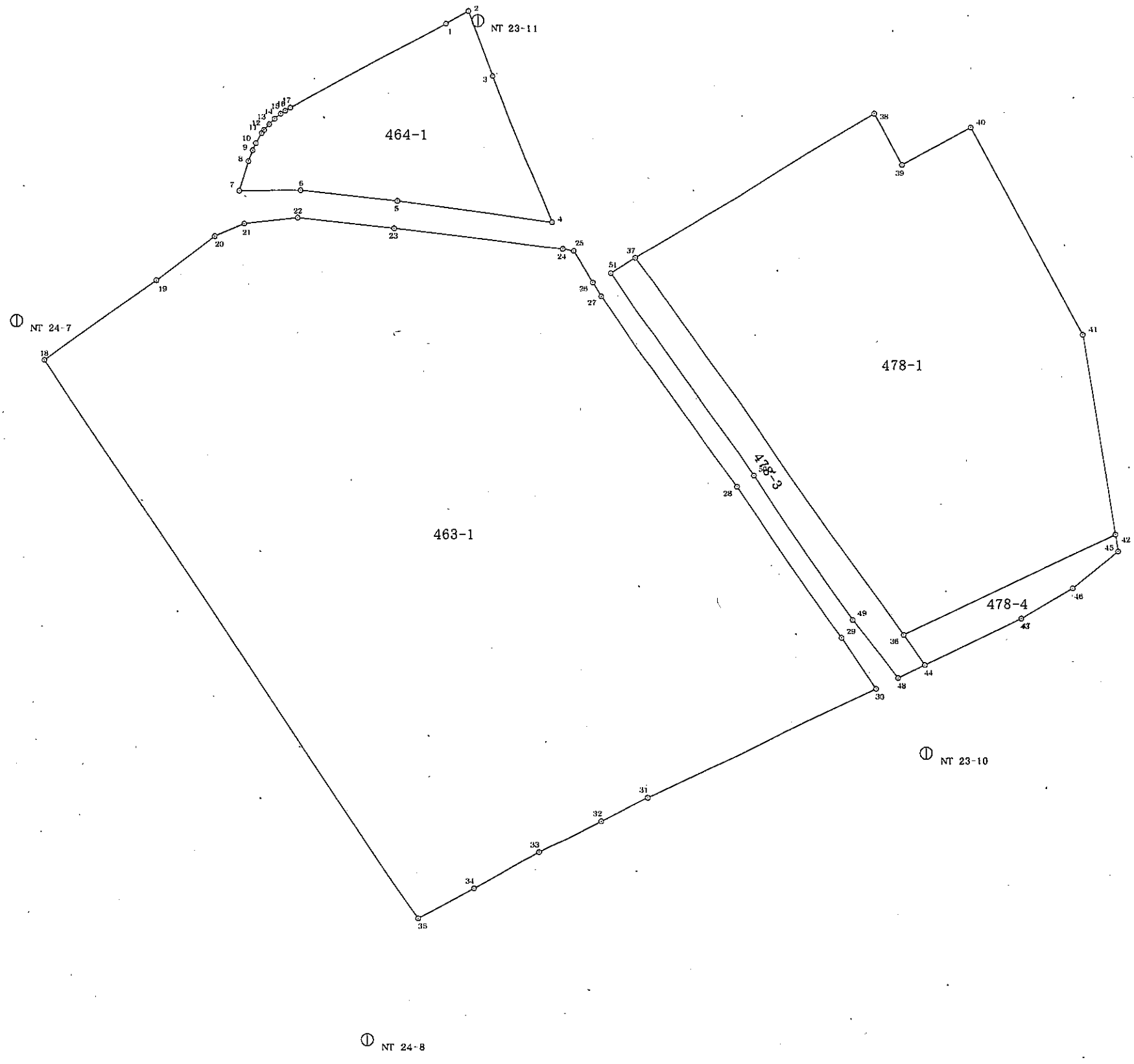
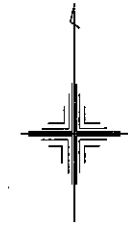
地番 478-4				
測点	X座標	Y座標	$Y_{n+1}-Y_{n-1}$	$X*(Y_{n+1}-Y_{n-1})$
43	135.109.494	27.579.165	-9.851	-1,330.963.625394
44	135.104.802	27.569.352	-11.967	-1,616.799.165534
36	135.107.873	27.567.198	19.424	2,624.335.325152
42	135.118.023	27.588.776	21.847	2,951.923.448481
45	135.116.309	27.589.045	-4.319	-583.567.338571
46	135.112.566	27.584.457	-9.842	-1,329.777.874572
47	135.109.516	27.579.203	-5.292	-714.999.558672
倍面積			151.210890	
1/2			75.6054450	
地積			75 m ²	

地番 478-3				
測点	X座標	Y座標	$Y_{n+1}-Y_{n-1}$	$X*(Y_{n+1}-Y_{n-1})$
36	135.107.873	27.567.198	29.091	3,930.423.133443
44	135.104.802	27.569.352	-0.590	-79.711.833180
48	135.103.490	27.566.608	-7.231	-976.933.336190
49	135.109.427	27.562.121	-14.564	-1,967.733.694828
50	135.124.124	27.552.044	-24.433	-3,301.487.721692
51	135.144.735	27.537.688	-11.783	-1,592.410.412505
37	135.146.291	27.540.261	29.510	3,988.167.047410
倍面積			313.182458	
1/2			156.5912290	
地積			156.59 m ²	

基準点	X座標(m)	Y座標(m)
NI 23-10	135.095.834	27.569.431
NI 24-7	135.140.011	27.477.156
NI 24-8	135.066.880	27.512.651
NI 21-5	135.110.015	27.614.389
NI 23-11	135.170.374	27.523.981
NI 24-6	135.177.718	27.451.345

現場点名	X座標(m)	Y座標(m)
27.374	135.153.403	27.508.860
27.375	135.153.007	27.516.027
27.376	135.152.076	27.521.809
27.523K	135.148.078	27.523.978
27.526K	135.149.933	27.508.771
A.12043	135.158.929	27.574.305

⓪ NT 24-6



⓪ NT 21-5

⓪ NT 23-10

⓪ NT 24-8